

## MSP Jointer Table Extensions

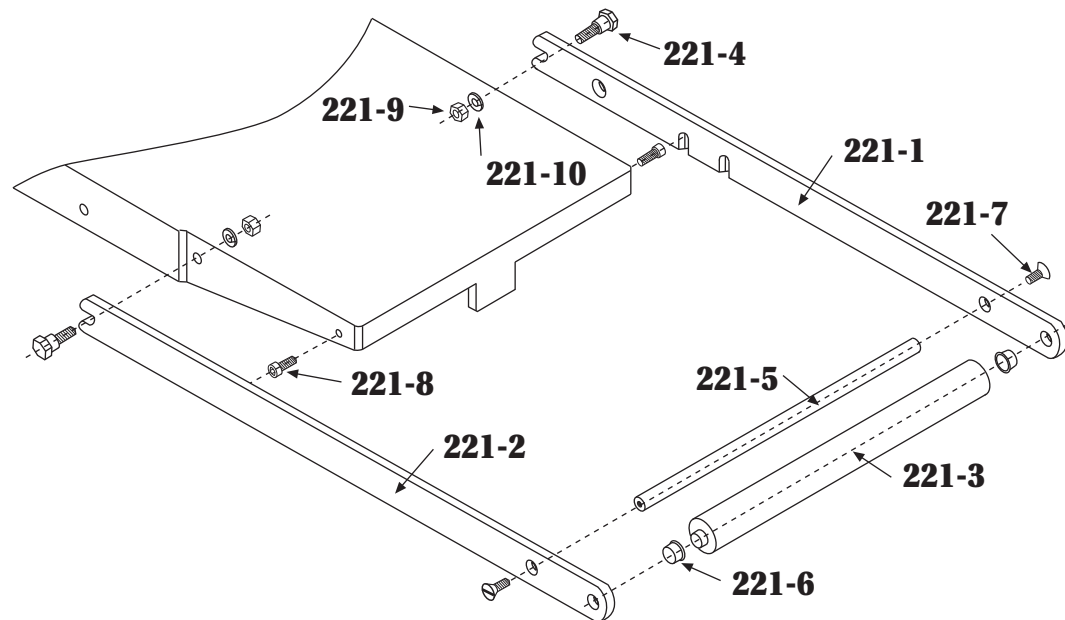
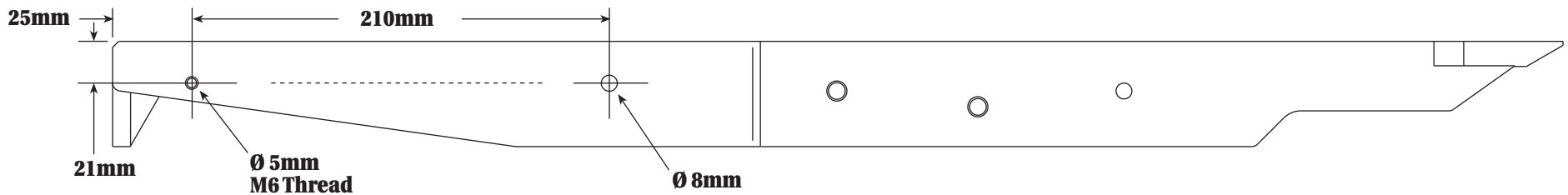
The jointer table extensions can be mounted on either the in-feed or out-feed table, or both.

The height of the rollers can be adjusted to be level with the jointer table by turning the eccentric screw (221-4) after releasing the locking nut (221-9). After adjusting, re-tighten the locking nut.

The extensions can be easily detached by lifting the side bars (221-1 & 221-2) so that the bolt (221-8) clears the slots in the bars.

If the machine table has not been prepared to mount the jointer table extensions, it will be necessary to drill and tap screw holes for each extension:

1. Drill two holes for bolts 221-8, according to the diagram below, on both sides of the table (5mm in diameter).
2. Tap each of the 5mm holes for bolts 221-8 with an M6 thread.
3. Drill two holes for bolts 221-4, according to the diagram below, on both sides of the table (8mm in diameter).



**Rojek Woodworking Machinery**  
**Tech Mark, Inc. (501) 945-9393**